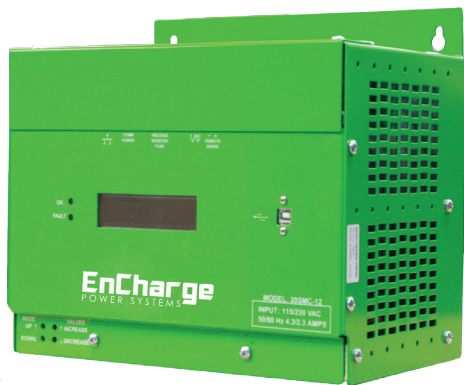


Pro HE Battery Charger

The EnCharge Pro HE series is a complete microprocessor controlled switch mode charger for use with Lead Acid and NiCad batteries available in five models with a range of specifications to meet your needs. The unit is EnVision Monitor ready to improve efficiency of monitoring and data collection.



Features:

- Battery voltage monitor with relay output
- Remote voltage sensing capability
- Temperature compensation with controlled limits
- Adjustable current limit
- Ethernet and USB ports for monitoring and configuration
- Operating temperature -40° to $+158^{\circ}$ F with 0-95% non-condensing humidity
- +/- 0.25% voltage regulation
- Universal input of 90 – 264VAC 47-63Hz
- Up to 90% more efficient
- 2-year limited warranty
- EnVision Monitor ready

EnCharge
POWER SYSTEMS

www.enchargepowersystems.com
sales@enchargepowersystems.com
(888) 407-5040

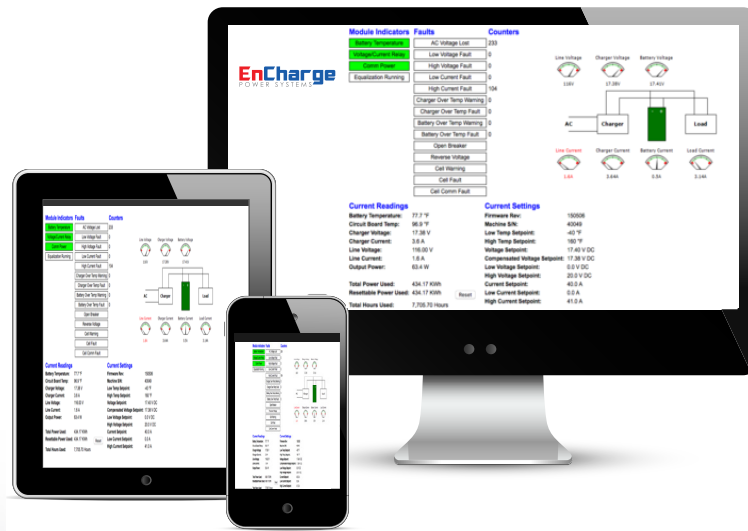
Pro HE Battery Charger

Model Specifications

Model No.	Cell	Input Amps 120/240	Output Amps	Output Volts
20 ProHE-12V	5 - 8 Lead Acid 5 - 12 NiCad	4.0/1.9 Amps	20 Amps	7 - 18.8 Volts
30 ProHE-12V	11 - 18 Lead Acid 19 - 26 NiCad	14.0/7.0 Amps	30 Amps	24 - 42.8 Volts
40 ProHE-12V	5 - 8 Lead Acid 5 - 12 NiCad	8.6/4.6 Amps	40 Amps	7 - 18.8 Volts
60 ProHE-12V	5 - 8 Lead Acid 5 - 12 NiCad	14.0/7.0 Amps	60 Amps	7 - 18.8 Volts

EnCharge Remote Monitoring

- The EnCharge Pro HE charger is compatible with the EnVision Remote Monitoring system allowing convenient anywhere access to the status of equipment and data, anytime.
- Allows viewing of historical data and uses information, real-time data and predicts future performance of cells and batteries.



EnCharge
POWER SYSTEMS

www.enchargepowersystems.com
sales@enchargepowersystems.com
(888) 407-5040